





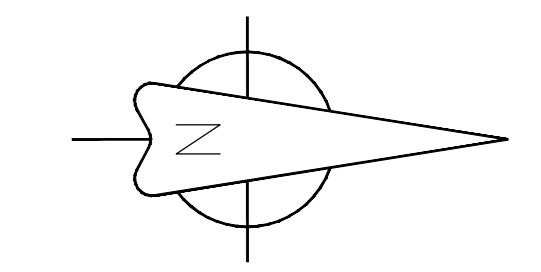
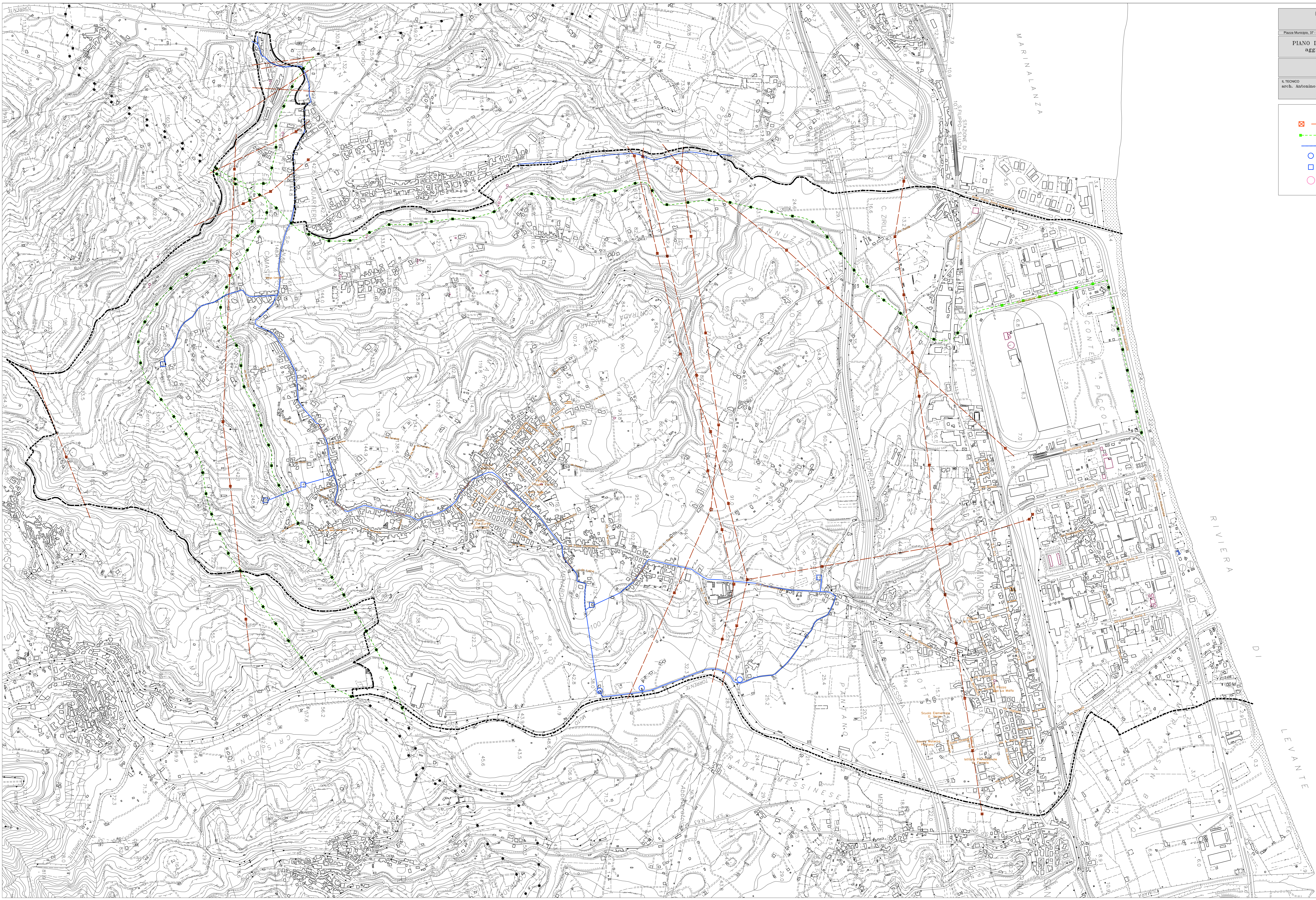


COMUNE DI PACE DEL MELA
 PROVINCIA DI MESSINA
 AREA 4 - TECNICO MANUTENTIVA

Piazza Municipio, 37 - 98042 - Pace del Mela (ME) - Tel. 090 9347223 Fax 090 9347219 - ufficiotecnico@comune.pace-del-mela.me.it

PIANO DI PROTEZIONE CIVILE COMUNALE aggiornamento ed integrazione		COD:	03/07/2014
Reti tecnologiche		TAVOLA:	PC 04
IL TECNICO arch. Antonio Camestre		SCALA:	1:5.000
		IL RESPONSABILE AREA 4	ing. Arturo Alonci

-  Reti Elettriche (traliccio, elettrodotti, cimate elettriche)
-  Metanodotti
-  Acquedotto
-  Pozzo comunale
-  Serbatoio comunale
-  Vacca, Cisterna



500 metri